

PRODUCED IN KENT

THE BEST OF FOOD, DRINK,
PRODUCTS AND SERVICES
FROM THE GARDEN OF
ENGLAND

TASTE OF KENT AWARDS 2019



Winners
Announced!

Find out more at
tasteofkentawards.co.uk



Outstanding Branding from Sand Creative

Sand Creative currently have lots of lovely projects on with Produced in Kent members such as Curd & Cure, Dudda's Tun, Goody Ales, Shepherd Neame, Brogdale Collections, Kentish Pantry and Canterbury Ales.

If you are thinking of a brand refresh this year or establishing a new product that needs packaging and branding then get in touch.

sand-creative.com



Biddenden Celebrates 50th Anniversary

2019 marks Biddenden Vineyard's 50th anniversary, with the first vines having been planted in 1969. The vineyard remains a family business, with the second & third generation of the Barnes family running the vineyard on a day to day basis. Following on from last year's bumper harvest there should be some exciting wine releases over the coming year to raise a glass with! The vineyard is open to visitors daily and the full range of wines, ciders & juices are available to taste & buy in the vineyard shop.

biddendenvineyards.com

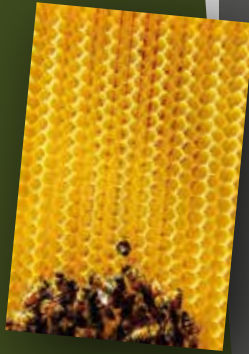


HONEY BEES AT BROGDALE

We are very excited to report we have raised enough funds through our charity efforts to purchase 5 bee hives for Brogdale Farm, in Faversham. In the spring we will have our own hives of honey bees to support The National Fruit Collection and act as a learning resource for our schools educational program and adult 'taster' days. Michael White of Rural Courses will be managing the bees for us before we train up a number of our own volunteers to look after them.

We are looking for 5 companies to sponsor the hives, who in turn will receive updates on their hive and the opportunity to visit the farm.

brogdalecollections.org



WHITSTABLE LARDER

Whitstable Larder has introduced some new products to their online shop celebrating goodies which are produced in and around Kent. We are particularly excited to introduce our Whitstable Breakfast and Brunch Boxes, Welcome Boxes, Snack and Deli boxes, all with free local delivery. Whitstable Larder hand picks our favourite goodies to fill our boxes and hampers which are brimming with delicious Kentish food and drink. We aim to tell the 'behind the scenes stories' of small producers, with a focus on what is local. If you would like to find out more take a look at our website.

whitstablelarder.co.uk



Pre-Order Simpsons 2016 Sparkling Wines

Simpsons' Wine Estate, Barham, is delighted to offer you the opportunity to pre-order the second of our 2016 sparkling wines that will be released in May 2019!

Created from estate grown Chardonnay and Pinot Noir grapes, our traditional method classic cuvée is the epitome of English elegance. Pale gold in colour, it has an enticing caramelised pear and floral millefeuille nose with bright citrus flavours, linear precision and impressive length.

To pre-order, visit the website:

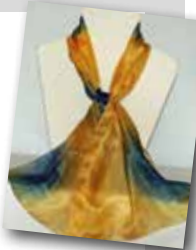
simpsonswine.com/collections/wine



Designs on Silk in Springtime

The spring season for Designs on Silk starts at Coolings Nurseries, Knockholt, TN14 7NN from Friday 22nd to Sunday 25th March. Come and browse locally made goods. In early May, Designs on Silk will be returning to RHS Hyde Hall Garden, Essex CM3 8ET. There will be a craft and design show from Friday 4th May until Monday 7th May within this beautiful garden. Wrotham Arts Festival is taking place 10th-12th May where I will be in St George's Hall TN15 7AH. From 7th - 9th June I will be at the Garden Show at Stansted Park PO9 6DX.

designs-on-silk.co.uk



Whats going on at the Kings Head in Spring?

Sunday 31st March, Mothers day 2019. Join us to celebrate and say thank you to your mum, with a delicious set menu including Sunday roast 2 course for £25 and 3 for £29.

The Vintage Fair - Saturday 6th April, Come and feast your eyes over some stylish and interesting vintage items in our coach house alleyway from 9am to 12pm. If you're in Wye why not pop in for a coffee and breakfast after shopping?

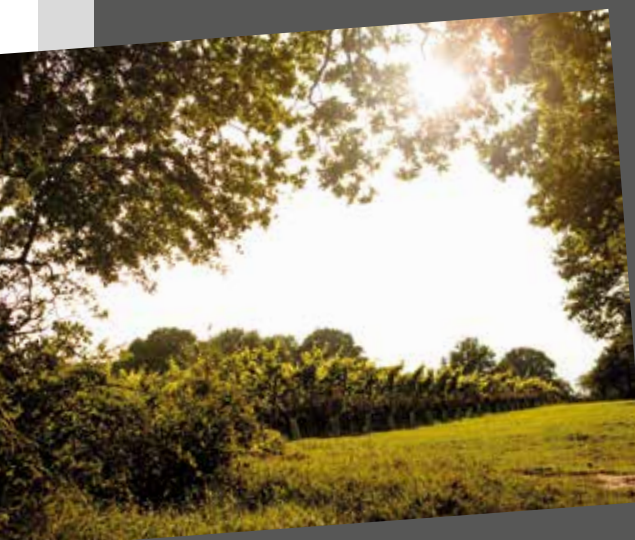
kingsheadwye.com



Gusbourne Opens New Garden Area

We are delighted to announce the opening of our new garden area from 1st April 2019. Featuring an extended outside seating area and an outside bar, our guests can enjoy a glass of wine overlooking the vineyards in Appledore, whilst being protected from the elements under a new canopy. Guests are now welcome to drop in without a reservation 7 days a week, from 10am to 5pm, to enjoy a walk around the vineyard and a glass (or a bottle) of wine, accompanied by cheese and charcuterie platters.

gusbourne.com/visit



Introducing Defined Wines

We are a new contract winery based outside Canterbury, just off the A2.

We offer a range of services, from 'crate to case' for a full winemaking service, or any element of this, whether it be contract crushing, bottling, on lees storage, or riddling and disgorging. More details at

definedwine.com

Defjned

WHAT'S ON?



➤ Mother's Day at Port Lympne Hotel – Sunday 31st March

Enjoy a very special Sunday lunch, dinner, or afternoon tea for Mother's Day.

Lunch will be served from 12pm to 3pm, whilst dinner is served from 6pm until 9pm in the beautifully decorated Port Lympne Hotel Restaurant near Hythe. Priced at £25 for two courses and £30 for three courses. Sparkling Afternoon teas will be served in the stunning Spencer Roberts and Long Room at Port Lympne Hotel and are served from 2.30pm until 5pm, priced at £24 per person.

Pre-booking is essential and entrance to Port Lympne Reserve is not included. **Please call 01303 234111 to book.**

aspinallfoundation.org/port-lympne

➤ Romney Marsh Wools Open Day – Sunday 7th April

Following on from the success of our first open day last year, we are very excited to announce that we will once again be opening our farm gates to visitors.

There will be the chance to meet our lambs and find out about the sheep whose wool is used to produce our range as well as more about life here on the farm. Also joining us will be some specially selected producers bringing Kentish food, drink & crafts with them and we will of course have our full range available to buy on the day as well. Admission is free of charge and we will be open to visitors from 11am - 3pm.

romneymarshwools.co.uk

➤ Pearson's Arms Encourages Young Diners

Cosy Whitstable seaside pub the Pearson's Arms is living up to its welcoming ethos by opening its restaurant early for younger diners.

Family Friendly Dining will be running throughout the year Tue-Sat (5.30-7pm) where children under 7 accompanied by an adult can eat for free.

Families can come out early evening and dine at the Pearson's Arms before the crowds appear. There is a special children's menu which includes mini pub classics but - as everything is cooked from scratch in the kitchens - the chef can prepare any of the à la carte dishes as a smaller portion for budding gastronomes.

pearsonarmswhitstable.co.uk



➤ Solley's Ice Cream Parlour opening for summer season – Saturday 6th April

Solley's Ice Cream Parlour in Ripple will be re-opening for the summer season and will be open daily until the end of September. The Parlour serves food & drink, including our delicious ice cream, all made on site and with a choice of over 15 flavours! Open 7 days a week (excluding Mondays in September) 10am - 4pm, admission is free of charge.

solleysicecream.co.uk



➤ Tonbridge Food & Drink Festival - Saturday 25th & Sunday 26th May

Open 11am - 6pm - Free Entry. Fire up your taste buds again at this year's fabulous festival in the town's beautiful castle grounds. Try, taste and buy from more than 70 stallholders selling a delicious range of food and drink produced in and around Kent and from across the globe.

We've got lots of fun activities planned to entertain the whole family including an exciting programme of cooking demonstrations from popular local chefs, food producers and local food writers.

TonbridgeFoodandDrinkFestival/

➤ Plan amazing days out with our curated food trails



Go to KentFoodTrails.co.uk to get started!

➤ Kent Crisps launch new pack front

Leeds Castle has become the official face of Kent Crisps Sea Salt & Vinegar with Biddenden Cider flavour, in celebration of the castle's 900th anniversary. Packs will feature Leeds Castle on the front of both 40g & 150g sizes and it is hoped that this exciting new partnership will continue to build on Kent Crisps' work showcasing just how much Kent has to offer both in the way of the delicious food & drink produced here in the county and the stunning attractions & destinations. The crisps are available from all good farm shops & delis, plus selected supermarkets regionally - **look out for the new Leeds Castle packs hitting the shelves!**

kentcrisps.com



➔ Rescue Rollerballs from Blended Therapies

Blended Therapies are pleased to be able to offer their ever popular Rescue Rollerballs as a complete set for £30 from their website and at events. Each set contains 'Sneezy' for hay fever and allergy relief - brilliant at this time of the year. 'Stop It! Head' for headaches, 'Stop It! Cold and Flu', 'Stop it! Ears', which helps relieve earache or pain from flying, 'Balance It!' for erratic hormones and 'Calm It!' to help relieve anxiety.



Review from Streetlife about Sneezy 'I used to take at least 1 antihistamine a day. Since I started using this last summer, I've stopped using antihistamines altogether. It smells nice too.'

blendedtherapies.co.uk

➔ Bore Place Introduces New Fermenting and Pickling Workshop

In response to visitor demand, Bore Place, Edenbridge, is launching a brand new course exploring methods of pickling and fermenting on Sunday 23rd June.

Led by a professional chef, this course will be a hands-on introduction to pickling and, specifically, fermenting. Participants will use vegetables that have been grown in the Bore Place organic market gardens and will harvest vegetables themselves for a true farm to table experience!

Recipes and methods covered will include Korean kimchi, fresh vegetable sauerkraut as well as pickles and chutneys. The course includes tea, coffee and lunch including fermented sourdough bread a seasonal soup made with vegetables grown onsite, and a superfood pro-biotic salad.

boreplace.org



➔ Sustainable floristry from Chambers Farm Flowers.

Recent research into the carbon footprint of flowers, found that a bunch of flowers grown in the UK accounted for 1.7kg of CO₂, compared to a whopping 30kg for imported flowers. With over 90% of flowers purchased in the UK coming from overseas it's easy to see the enormous environmental impact choosing British flowers could have. At Chambers Farm Flowers in Marden, we are committed to producing beautiful blooms which don't cost the earth. Using organic methods, cutting down on plastic use with plant-based pots and removing all floral foam from our floristry. Choosing locally grown flowers is a simple way to reduce your carbon footprint and support small business.

chambersfarmflowers.com

➔ 40th Birthday Celebrations for Macknade Fine Foods

2019 marks the 40th birthday of Kent's leading food hall - Macknade Fine Foods. Starting life as a family farm, Macknade in Faversham, has been around for over 170 years, but it was not until 1979 that the award-winning retail operation began, set up as a tent in a field offering 'pick your own'. Patricia Neame & Renato Cuomo were the



pioneers behind this venture and it is their son, Stefano Cuomo, who heads up the 10,000 sqft food hall, delicatessen, butchery & café in its present incarnation today. Look out for celebrations in-store over the coming months!

macknade.com

➔ Lots of new designs and materials for Goossens Bags

Here at Goossens Bags I am currently working on adding some more sustainable, environmentally friendly materials to my ever growing range of bags. I'm starting with the introduction of recycled materials made into bum bags with a new festival, dog walking or holiday ready life awaiting them. I am now eagerly anticipating the arrival of a new biodegradable cork fabric, with endless possibilities, that I can't wait to explore. Keep a lookout on social media for more details.

GoossensBags.etsy.com




➔ Wonky Parsnip


We are busy sowing seeds here there and everywhere down in the patch at Chartham, and are very much looking forward to the spring. We will be offering a weekly delivery service this year as well as plenty of farm tours and supper clubs! We are also going plastic free this year! Send us an email to be added to our weekly price list mailing list: thewonkyparsnip@gmail.com



For more information contact Produced in Kent at: info@producedinkent.co.uk

 Follow us on Twitter @ProducedinKent

 Find us on Facebook /producedinkent

 01732 853170

Sign up to the mailing list to see more foodie news & events!



Produced in Kent
A non profit organisation working in partnership with Kent County Council and Hadlow Group

Designed by:

