
PRODUCED IN KENT

THE BEST OF FOOD, DRINK,
PRODUCTS AND SERVICES
FROM THE GARDEN OF
ENGLAND

TASTE OF KENT
AWARDS
2020



**Winners
Announced!**

Find out more at
tasteofkentawards.co.uk

Find out more at
tasteofkentawards.co.uk



➡ Produced in Kent's New Direction

Produced in Kent is proud to represent food and drink businesses at such an exciting time for the industry. With British food generally gaining in popularity in and outside of the UK, the sector is flourishing in Kent and is attracting a growing number of tourists to the county. The demand for local sustainable food in particular is increasing, due to a growing public awareness of the need to protect the environment and use natural resources more efficiently.

In the past months, we have been working hard on our Strategy 2020-2023, and we are keen to share some of its main points with you. You can read more on here: producedinkent.co.uk/produced-kents-new-direction/

3 DAY WINE RETREAT FROM WINE TOURS OF KENT

As we come into spring, we are extremely excited to offer something a little different on top of our full day wine tours. Wine Tours of Kent will be offering an exclusive 3-day wine retreat in May, we have collaborated with a local accommodation provider and chef to bring you a luxurious fully catered weekend. We will of course be visiting a handful of Kent's vineyards over the weekend. All produce will be locally sourced, and the menu will be paired with a selection of Kent wine and beers.



To find out more- keep an eye out on our website winetoursofkent.co.uk or follow [WINETOURSOFKENT](#) on Instagram.

>Welcome in the spring with some outdoor eating in our Kitchen Garden at THE PIG-at Bridge Place

Set right in the heart of our walled Kitchen Garden, our rustic and reclaimed outdoor kitchen is opening its doors for the season on Tuesday 7th April. Head over the rickety bridge, past the spring sprouting through the Greenhouse and out into the Garden Oven courtyard to find wood-fired cooking and some seriously tasty Kentish tipples. Enjoy simple and tasty flat breads and Fire-Pit meats and veggies served from 12pm -6.30pm.



Drop in dining at its finest, no need to book!

thepighotel.com

Pure Wix get greener for 2020

Here at Pure Wix we have had a very busy few months and are looking forward to 2020 with new products - eco diffusers, using a glycerine base, and soy wax melts including rapeseed wax, fully compostable tealights - no plastic and we will be

looking at selling replacement fragranced diffuser bottles. We will be busy at lots of shows in Kent but will also be going to Essex and Sussex - follow us on Instagram and Facebook to find out more!

wixcandles.co.uk

Visit the Darent Valley this Spring

Castle Farm is set in one of the most picturesque areas of Kent - the Darent Valley. There is plenty to entertain the whole family for a great day out in the local area - from walks and gardens through to country village pubs and quaint little tea houses. If you are in the area, pop in and say hello. The Hop Shop at Castle Farm is open every day, and at this time of year, filled with Spring décor, seasonal produce, gifts, treats and plants for the garden.

Find links to a guided walk 'From Hops to Lavender' on our website: hopshop.co.uk



Barham Village Store shortlisted in Rural Oscars

Barham Village Store was delighted to win last year's Taste of Kent award as the best local retailer 2019. They have now added to this accolade by being the only business in Kent to be short listed for the regional finals of the prestigious Countryside Alliance awards, rather grandly promoted as the Rural Oscars.

The shop is owned and run by some 70 volunteers from Barham and with manager Debbie Woodward at the helm.

The shop has been praised for the range of local produce offered and the fact that surplus income is ploughed back into the community for charitable purposes.

barhamvillagestore.com



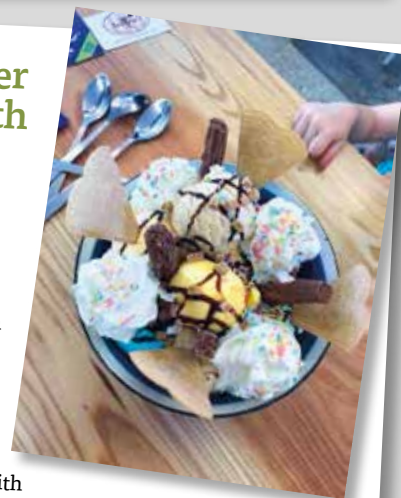
Summer is here with Solley's Ice Cream Parlour

Solley's Ice Cream Parlour will be open daily from Saturday 4th April 2020 for the summer season, serving ice creams, sundaes, Solley's super bowls along with hot & cold drinks and light lunches. Come and burn off some energy exploring our farm trail, take a tractor ride around the farm (weather dependant) then join us in the ice cream Parlour for a tasty treat!

Open daily 10am - 4pm 4th April - end September (closed Mon & Tues in Sept). Free admission & parking.

Solley's Ice Cream Parlour, The Dairy, Ripple, Nr Deal, Kent CT14 8JL

solleysicecream.co.uk



Macknade opens at Elwick Place

Leading independent food & drink brand, Macknade, has opened its doors in Elwick Place. Offering all day dining & drinking in the heart of Ashford, dishes reflect Macknade's Kentish-Italian heritage and focus on quality ingredients, cooked simply to bring out their flavour. You can enjoy breakfast, brunch, lunch & dinner in the new space or unwind with a drink at the bar. There is also a fully stocked delicatessen counter and a selection of daily essentials & specialist ingredients for you to take home and fill your cupboards with. For more information, please visit macknade.com/elwick-place/.



WHAT'S ON?

Art at Chartham Vineyard Gallery – Every Saturday from 22nd February

Featuring work of the Ashford Visual Artists. Their work will include painting, photography, textiles, sculpture, metalwork, jewellery, and printmaking. Beginning Saturday 22nd February, open every Saturday from 10.30 to 5.30 until 11th April. AVA are professional artists who have exhibited widely and been represented in national competitions. All the work exhibited will be for sale. Also free tasting of all our wines both still and sparkling. This is a great chance to combine your interest in art, with your love of wine!

charthamvineyard.co.uk



Romney Marsh Wools Open Day 2020 – 5th April, Aldington

We will be opening our farm gates again on Sunday 5th April for the third annual farm open day.

Meet the lambs and find out more about the sheep & life on our farm. There will be Kentish crafts, food & drink available plus activities for children of all ages, the chance to have your photo taken in a tractor and face painting. We'll also have past Master Chef winner, Julie Friend, dishing up some delicious foodie treats from our Shepherds Huts.

The open day will run from 11am - 3pm at Rushfield, Giggers Green Road, Aldington, Kent TN25 7BT. Admission is free of charge.

romneymarshwools.co.uk



Broadstairs Easter Food Festival - 11th - 13th April

It's back! NEW LOOK - NEW VENUE.

The Spring fair makes a welcome return - with a new look and a new venue. We'll be bringing 50+ stalls of produce and hot food to Victoria Gardens Easter weekend. FREE entry - afternoon music on the bandstand Saturday - and a brass band on Sunday.

broadstairsfoodfestival.org.uk



Biddenden Vineyards Open Tours now taking bookings

Running every Saturday from April – September, our open tours provide the perfect introduction to Biddenden, our history and our wines.

Arrive at 10.15am for a complimentary cup of tea, coffee or juice in the vineyard shop. The tour will begin at 10.30am and last approximately 1 hour. Your guide will take the group around the vines, into the winery and then back into the vineyard shop for tastings.

Open tours cost £10 per person & pre-booking is essential as places are limited. Private guided tours for up to 10 people are also available, please get in touch to book.

Biddenden Vineyards, Gribble Bridge Lane, Biddenden, Kent TN27 8DF

biddendenvineyards.com



Experience a taste of Kent with Romney Marsh Shepherds Huts

Situated on the beautiful Romney Marsh, our Shepherds Huts provide the perfect escape from the hustle & bustle of day to day life. Offering short breaks, ideal for exploring the Kent countryside, or simply enjoying the tranquil surroundings from the comfort of your Shepherds Hut. For those looking for something a little extra, why not book one of our new experiences such as a local vineyard tour & tasting with Wine Tours of Kent or private dining with former Master Chef winner, Julie Friend? More information and booking details may be found at romneymarshshepherdshuts.co.uk



Let's All Be Heroes

Let's beat childhood obesity together, says the team at Wonderchup. Wonderchup are supporting the Charities Action on Sugar and Action on Salt in their drive to wean children off sugar and salt. 1/3rd of children in the UK are leaving primary school obese. Imagine the impact on their physical and mental health. It is time to replace family favourites laden with sugar and other nasties with scrumptious, healthy, no added sugar or salt alternatives. Be a food hero at wonderchup.com

[#healthyandplanetkind](https://twitter.com/healthyandplanetkind)



➔ New - Space Garden at Brogdale

In 2015 apple pips from the iconic Sir Isaac Newton tree were taken on the Principia mission by British astronaut Tim Peake to the International Space Station. The pips then spent six months floating in micro gravity as part of the 'Pips in Space' project before returning to Earth in 2016.

Brogdale has been selected to share the story of space travel, Isaac Newton, horticulture and the wonders of science as part of our ongoing commitment to education.

Our Space Sapling will form the central part of our new Space Garden. We will also be planting 4 more grafted Newton saplings with different rootstock to act as a growth comparison.

The space themed garden will include raised beds with space themed plants such as Hostas (Super Nova, Galaxy, Voyager, Gamma Ray, Lunar Eclipse), Daylilies (Andromeda, Asteroid, Black Hole), Cosmos, Rocket.

brogdalecollections.org



➔ Farmers Markets in Kent celebrating 20 years in 2020

It's a big year for farmers markets in Kent this year with several markets celebrating their 20th birthday and a number of the farmers markets stallholders and organisers being involved from the very start. The farmers markets have changed over the years from being something of a curiosity to now being the mainstay of many people's shopping baskets.

As long as people want to shop locally, seasonally and buy direct from farmers, fishermen, bakers and producers, the farmers markets will be here to support them.

Celebrating 20 years this year:

- Lenham Country Market - 2nd Sunday of the month
- Rochester Farmers Market - 3rd Sunday of the month
- West Malling Farmers Market - 4th Sunday of the month.

For more details: 07775 736116

myfarmersmarket.co.uk



➔ Oak Creative has arrived at Coachworks Ashford

Kent design agency Oak Creative have taken on a brand new studio at the The Coachworks co-working space in Ashford. Laura Bevan says 'We're very excited to be a part of The Coachworks in Ashford. It's the perfect opportunity for our creative business to be at the centre of everything Ashford has to offer.' Laura has recently stepped into the role of Studio Director and this additional studio space is part of her ambitious plans for moving the business forward. The revived industrial buildings adjacent to Ashford International station include a new co-working space, outdoor eateries and traders, plus an indoor events space with weekly markets.

oakcreative.net



➔ Karimix

Karimix UK Limited is a BRC accredited producer of condiments: pickles, relishes, chutneys, pastes & sauces supplying both foodservice & retail.

All products are artificial additive and GM free. The range is also Vegan/Vegetarian approved.

We are proud to be finalists in the 2020 Taste of Kent Awards: Kent Food Product Ambient Class and Food Business of the Year.

We are delighted to announce that we are making the next step in meeting our clients' needs by becoming a gluten-free site.

This will continue to establish the continued quality & provenance of the brands which already hold 24 Great Taste Awards.

karimix.com



➔ Simpsons' Wine Estate Celebrates Walpole Brands of Tomorrow 2020

Walpole, the industry body for the UK's luxury sector, has selected Simpsons' Wine Estate, based in Barham near Canterbury, for participation in its flagship development programme, which supports growing luxury businesses. The aim of the initiative is to strengthen "the success and dynamic growth of the luxury industry through transference of skills, experience and know-how to ensure continued creative development".

This is a magnificent opportunity for Simpsons' Wine Estate, owing to the successes of the brand and the flourishing team behind it. The esteemed partnership with Walpole is sure to elevate the business even further and is a wonderful sign of things to come for the Estate. simpsonswine.com



➔ Communigrow: Growing your own food


If you want to grow your own food but don't know how or don't have the space, don't give up. Come to Communigrow — an educational hub located in East Malling. We reconnect people to places where their food comes from by providing field based sessions to community groups, schools and individuals.


Families of all ages, background and levels of experience are welcome to be part of a growing and learning experience. In March we are starting our Taster Sessions, Home Education Sessions and Communigrow Talks.


More details: communigrow.org.uk or contact us at info@communigrow.org.uk



For more information contact Produced in Kent at: info@producedinkent.co.uk

 Follow us on Twitter
[@ProducedinKent](https://twitter.com/ProducedinKent)

 Follow us on Instagram
[/producedinkent](https://www.instagram.com/producedinkent)

 Find us on Facebook
[/producedinkent](https://www.facebook.com/producedinkent)

 01732 853170

Sign up to the mailing list to see more foodie news & events!



Produced in Kent
A non profit organisation working in partnership with Kent County Council and Hadlow Group

Designed by:



thecircus.uk.com
01634 402 979